



# Office of General Services

DESIGN & CONSTRUCTION GROUP  
THE GOVERNOR NELSON A. ROCKEFELLER  
EMPIRE STATE PLAZA  
ALBANY, NY 12242

---

## ADDENDUM NO. 2 TO PROJECT NO. M3195

CONSTRUCTION WORK  
REPAIR BUILDING FACADE  
QUEENSBORO CORRECTIONAL FACILITY  
4704 VAN DAM ST  
LONG ISLAND CITY, NY 11101-3012

November 13, 2025

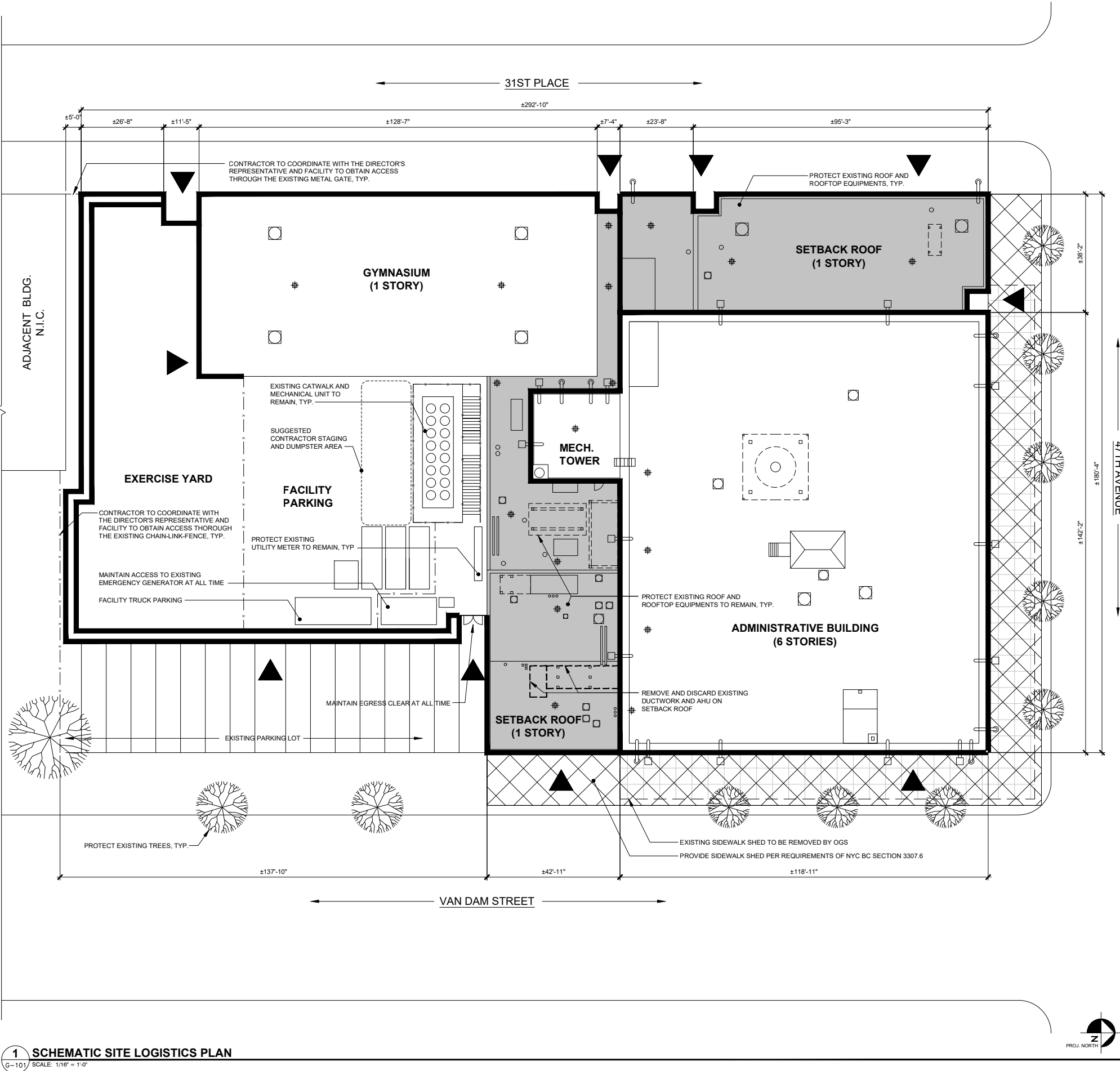
**NOTE:** This Addendum forms a part of the Contract Documents. Insert it in the Project Manual. Acknowledge receipt of this Addendum in the space provided on the Bid Form.

### DRAWINGS

1. Revised Drawings
  - a. Drawing Nos. A-101 and A-202, noted "Addendum No. 2" accompany this Addendum and supersede the same numbered originally issued drawings.

**END OF ADDENDUM**

Brady Sherlock, P.E.  
Director, Division of Design  
Design & Construction



**1 SCHEMATIC SITE LOGISTICS PLAN**  
 G-101 SCALE: 1/16" = 1'-0"

**LEGEND**

▲	ENTRY / EGRESS
▭	EXISTING SIDEWALK SHEDS
▨	PROVIDE SIDEWALK SHEDS
---	EXISTING FENCE
---	SCOPE OF WORK
⊙	PROTECT EXISTING TREES AND GRASS AREAS, TYP.
▭	PROTECT EXISTING ROOF AND ROOFTOP EQUIPMENTS
□	EXISTING EXTERIOR LIGHT FIXTURE
⊕	EXISTING CCTV
⊕	EXISTING DRAIN
⊕	EXISTING EXHAUST VENT

- GENERAL SECURITY NOTES:**
1. WORK MUST BE PERFORMED IN SUCH A MANNER SO AS TO MAINTAIN FACILITY SECURITY IN STRICT ACCORDANCE WITH SECTION 015633 OF THE PROJECT MANUAL.
  2. WORK NEAR THE PERIMETER SECURITY FENCES AND RAZOR WIRES MUST BE PERFORMED IN SUCH A MANNER SO AS TO MAINTAIN PERIMETER SECURITY IN STRICT ACCORDANCE WITH SECTION 015633 OF THE PROJECT MANUAL.
  3. COORDINATE AND SCHEDULE WORK INVOLVING THE PERIMETER SECURITY SYSTEMS WITH THE DIRECTOR'S REPRESENTATIVE AND THE FACILITY'S SECURITY SUPERVISORY PERSONNEL.
  4. SUBMIT A WORK PLAN IN STRICT ACCORDANCE WITH SECTION 015633 OF THE PROJECT MANUAL.
  5. SCHEDULE WORK A MINIMUM OF 72 HOURS PRIOR TO INTENDED WORK ON OR NEAR THE PERIMETER SECURITY SYSTEMS AND RAZOR WIRES.
  6. NO WORK IS TO BE PERFORMED NEAR THE PERIMETER SECURITY SYSTEMS WITHOUT WRITTEN APPROVAL FROM THE DIRECTOR'S REPRESENTATIVE AND THE FACILITY'S SECURITY SUPERVISORY PERSONNEL.
  7. THE EXERCISE YARD AND FACILITY PARKING ARE PROTECTED BY PERIMETER FENCES, RAZOR WIRES, PERIMETER LIGHTING SYSTEM, PERIMETER ALARM SYSTEMS AND PERIMETER SURVEILLANCE CCTV SYSTEM, WHICH ARE INTEGRATED TOGETHER TO WORK AS A SINGLE PERIMETER SECURITY SYSTEM. THESE SYSTEMS SHALL BE FULLY OPERATIONAL DURING THE WORK OF THIS CONTRACT. THE WORK REQUIRED BY THIS CONTRACT NEAR THESE SYSTEMS, SHALL BE PERFORMED IN SUCH A MANNER SO AS TO PREVENT ANY DOWN TIME (INTERRUPTIONS) TO ANY OF THESE SYSTEMS.
  8. THE EXACT LOCATION OF EXISTING PERIMETER SECURITY SYSTEM IS UNKNOWN AND SHOWN APPROXIMATE ONLY. BEFORE STARTING ANY WORK NEAR THE PERIMETER, DETERMINE EXACT LOCATION OF PERIMETER SECURITY SYSTEM (WHETHER SHOWN ON DRAWINGS OR NOT). DO NOT DAMAGE ANY PERIMETER SECURITY SYSTEM.
  9. EXTREME CAUTION SHALL BE USED WHEN WORKING NEAR THE PERIMETER SECURITY SYSTEMS AND THEIR ASSOCIATED CONDUITS. DO NOT CAUSE ANY DAMAGE TO THESE SYSTEMS. THE CONTRACTOR WILL BEAR THE COST TO REPAIR THE DAMAGE AND ANY COST INCURRED BY THE STATE FOR ADDITIONAL SECURITY STAFF TO PROTECT THE PERIMETER OF THE FACILITY DUE TO ANY OUTAGES OF THE SECURITY SYSTEMS.

- SITE PROTECTION NOTES:**
1. THIS DRAWING IS A CONCEPTUAL ILLUSTRATION INDICATING SCHEMATIC SITE LOGISTICS PLAN AND A MINIMUM LEVEL OF SITE PROTECTION. FOLLOW MORE STRINGENT RULES TO THE FULL EXTENT AND/OR PROVIDE ADDITIONAL FENCES, BARRICADE, AND SIDEWALK SHED AS DIRECTED BY OGS DIRECTOR'S REPRESENTATIVE.
  2. EXISTING SIDEWALK SHED WILL BE REMOVED BY DIRECTOR'S REPRESENTATIVE PRIOR TO CONTRACTOR MOBILIZATION. CONTRACTOR SHALL PROVIDE SIDEWALK SHEDS AS REQUIRED BY SECTION NYCBC 3307 (PROTECTION OF PEDESTRIANS). COORDINATE INSTALLATION OF SIDEWALK SHEDS WITH DIRECTOR'S REPRESENTATIVE, AS THERE SHALL NOT BE ANY GAP BETWEEN REMOVAL OF EXISTING SIDEWALK SHEDS AND INSTALLATION OF NEW SHEDS.
  3. SUBMIT A SITE SAFETY PLAN INCLUDING THE SIDEWALK SHEDS, FENCE, BARRICADE, SCAFFOLD, EXTERIOR STAIR TOWERS, STAGING AREA, LOCATION OF VACUUM TRUCK, CHUTE, AND DUMPSTER TO OGS DIRECTOR'S REPRESENTATIVE FOR APPROVAL PRIOR TO COMMENCEMENT OF THE WORK.
  4. MAINTAIN CLEAR PATH IN EMERGENCY EGRESS.



**Office of General Services**  
 DESIGN & CONSTRUCTION

CONSULTANT  
 CERTIFICATE OF AUTHORIZATION #: 0006552

**SUPERSTRUCTURES ENGINEERS ARCHITECTS**  
 14 WALL ST  
 NEW YORK, NY 10005

**Watts Architects & Engineers**  
 Environmental Sub-consultants:  
**WATTS Architecture & Engineering**  
**SINGLETON**  
 Construction Consultants  
 Estimate Sub-consultants:  
 Singleton Construction Consultants

**UNIFORM CODE STATEMENT:**  
 TO THE BEST OF THE REGISTERED DESIGN PROFESSIONAL'S KNOWLEDGE, BELIEF AND PROFESSIONAL JUDGEMENT, THESE PLANS AND/OR SPECIFICATIONS ARE IN COMPLIANCE WITH THE 2020 UNIFORM CODE.

**WARNING:**  
 THE ALTERATION OF THIS MATERIAL IN ANY WAY, UNLESS DONE UNDER THE DIRECTION OF A COMPARABLE PROFESSIONAL, I.E. ARCHITECT FOR AN ARCHITECT, ENGINEER FOR AN ENGINEER OR LANDSCAPE ARCHITECT FOR A LANDSCAPE ARCHITECT, IS A VIOLATION OF THE NEW YORK STATE EDUCATION LAW AND/OR REGULATIONS AND IS A CLASS "A" MISDEMEANOR.

**REGISTRATION EXPIRES:**  
 02/28/2026

**CONTRACT:**  
**CONSTRUCTION**  
 TITLE: REPAIR BUILDING FACADE  
 LOCATION: QUEENSBORO CORRECTIONAL FACILITY  
 47-04 VAN DAM STREET  
 LIC, NY  
 CLIENT: NYS DOCCS

02	11/04/2025	ADDENDUM No.2
	08/15/2025	BID DOCUMENT
MARK	DATE	DESCRIPTION

PROJECT NUMBER: **M3195 - C**  
 DESIGNED BY: NK / KH  
 DRAWN BY: HB  
 FIELD CHECK: KH / HB  
 APPROVED: PM / NK

SHEET TITLE:  
**SCHEMATIC SITE LOGISTICS PLAN**

DRAWING NUMBER:  
 G-101

SHEET 3 of 44

